



DEPARTMENT OF CONSUMER AFFAIRS • BUREAU OF HOUSEHOLD GOODS AND SERVICES
4244 South Market Court, Suite D, Sacramento, CA 95834
P: (916) 999-2041 | F: (916) 921-7279 | Web: bhgs.dca.ca.gov



TECHNICAL BULLETIN 39

Method of Measuring the Finished Size of Pillows

January 2025

METHOD OF MEASURING THE FINISHED SIZE OF PILLOWS

SCOPE

Technical Information Bulletin Number 39 sets forth the method that must be used when measuring bed pillows. Use this method to determine if a bed pillow complies with the finished size stated on the official law label, hang tags, or advertising materials.

EQUIPMENT

1. Flat surface
2. Steel tape measure
3. Two 90° straightedges

PROCEDURE

All measurements are made with a steel tape to the nearest 1/16 inch.

Measurements are made from 90° straightedge to 90° straightedge.

If the pillow has been vacuum-sealed or packed tightly, the pillow may need to decompress. In this situation, wait one hour for the pillow to reach a relaxed state.

Take measurements in the “push” mode of tape measure, with the end of the tape measure touching the straightedge.

NOTE: If the pillow has an outer casing / carrying case that is clearly not the pillow covering, remove before measuring. (**See Figure 7.**)

TO MEASURE LENGTH – Applies to All Sizes

1. Lay out the pillow in a relaxed state, without tension, on a flat surface. It should be free of wrinkles or creases.
2. Using two 90° straightedges, place the pillow so that each side gently touches a straightedge. Make sure that the pillow is not compressed. Take a single measurement using the calibrated tape measure at the longest point. Measurements are made from edge to edge in a line parallel to the edges. (**See Figures 1, 2, 3, and 4.**)
3. Report the measurement as the finished size length of the pillow in inches.

TO MEASURE WIDTH – Applies to All Sizes

1. Lay out the pillow in a relaxed state, without tension, on a flat surface. It should be free of wrinkles or creases.
2. Using two 90° straightedges, gently touch the pillow on each side, making sure that the pillow is not being compressed. Take a single measurement using the calibrated tape measure at the longest point. Measurements are made from edge to edge in a line parallel to the edges. (**See Figures 4, 5, and 6.**)
3. Report the measurement as the finished size width of the pillow in inches.

Figure 1: 90° Straightedge Positioning



Figure 2: Length Measurement of Pillow with 90° Straightedges – Loose Fill Pillows



Figure 3: Length Measurement of Pillow with 90° Straightedges – Foam Pillow



Figure 4: Close-Up Measurement Using “Push” Mode of Tape Measure with 90° Straightedges

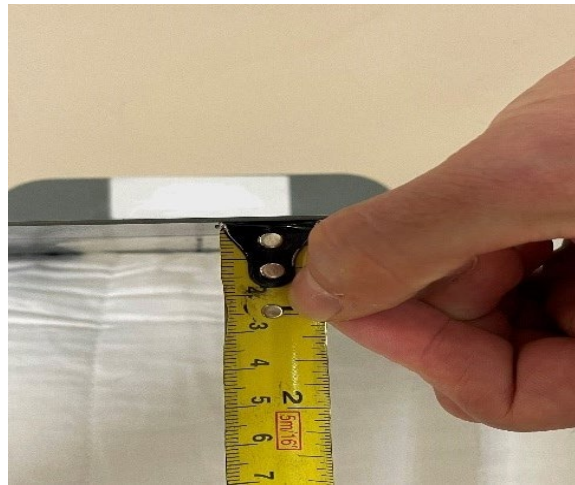


Figure 5: Width Measurement of Pillow with 90° Straightedges – Loose Fill Pillows



Figure 6: Width Measurement of Pillow with 90° Straightedges – Foam Pillows



Figure 7: Pillow Outer Casing Removal – Before and After

